



H

The ZM040N06HD combines advanced trench MOSFET technology with a low resistance package to provide extremely low $R_{DS(ON)}$.

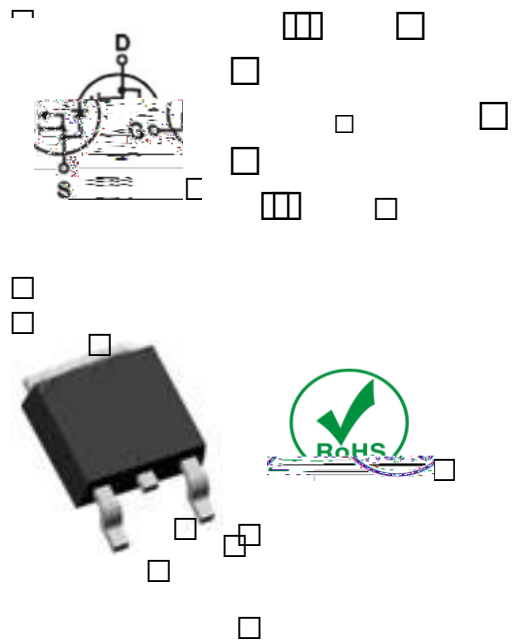
Trench technology

$R_{DS(ON)}$ to minimize conductive loss

E

nd Synchronous Rectifier

Product Summary



M

Part NO.	ZM040N06HD
Marking	ZM040N06H
Packing Information	Bulk Tube
Basic ordering unit (pcs)	2500

E

$T_C = 25$

Parameter	Symbol	Rating	Unit
Drain-Source Voltage	V_{DS}	60	V
Gate-Source Voltage	V_{GS}	± 20	V
Continuous Drain Current	$I_{D@TC=25}$	120	A
	$I_{D@TC=75}$	91.2	A
	$I_{D@TC=100}$	75.6	A
Pulsed Drain Current	I_{DM}	250	A
Total Power Dissipation($TC=25$)	$P_D@TC=25$	60	W
Total Power Dissipation($TA=25$)	$P_D@TA=25$	2.0	W
Operating Junction Temperature	T_J	-55 to 150	
Storage Temperature	T_{STG}	-55 to 150	



Thermal resistance

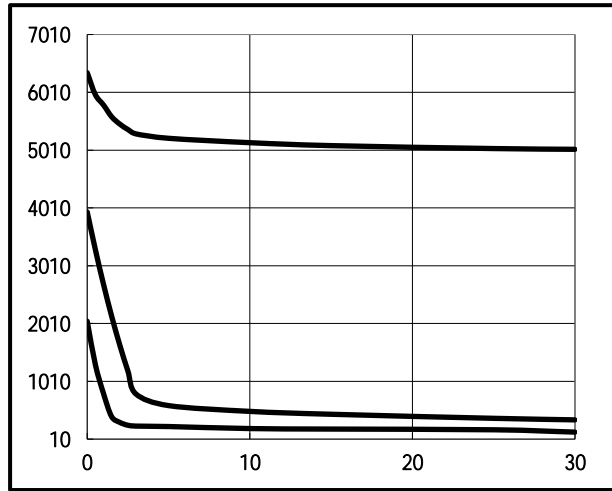
Parameter□	Symbol□	Min.	Typ.	Max.	Unit
Thermal resistance, junction - case	R_{thJC}	-	-	2.05	° C/W
Thermal resistance, junction - ambient	R_{thJA}	-	-	62.5	° C/W
Soldering temperature, wavesoldering for 10s	T_{sold}	-	-	265	° C

I G



Fig.1 Gate-Charge Characteristics

Fig.2





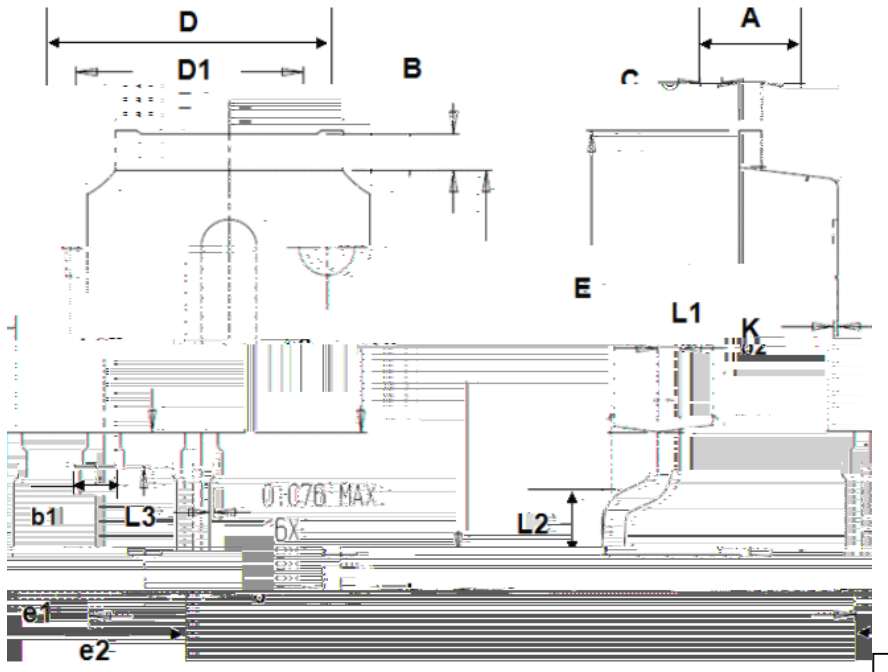
H (TO-252)

Unit mm

SYMBOL	min	max	SYMBOL	min	max
A	2.10	2.50	B	0.85	1.25
b	0.50	0.80	b1	0.50	0.90
b2	0.45	0.70	C	0.45	0.70
D	6.30	6.75	D1	5.10	5.50
E	5.30	6.30	e1	2.25	2.35
L1	9.20	10.60	e2	4.45	4.75
L2	0.90	1.75	L3	0.60	1.10
K	0.00	0.23			

□

□



□

□

□