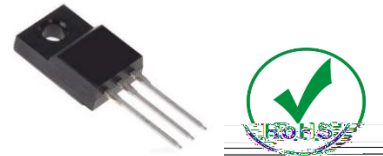




**Product Summary**

The ZMS035N08HF combines advanced trench MOSFET technology with a low resistance package to provide extremely low  $R_{DS(ON)}$ .

device constructure  
 $R_{DS(ON)}$  to minimize conduction loss

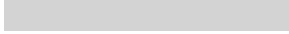


Synchronous Rectification for AC-DC/DC-DC converter  
Oring switches  
Power Tools

Part NO.	ZMS035N08HF
Marking	ZMS035N08H
Packing Information	Bulk Tube
Basic ordering unit (pcs)	500

**T<sub>c</sub> =25**

Parameter	Symbol	Rating	Unit
Drain-Source Voltage	$V_{DS}$	80	V
Gate-Source Voltage	$V_{GS}$	±20	V
Continuous Drain Current	$I_{D@TC=25}$	140	A
	$I_{D@TC=75}$	106.4	A
	$I_{D@TC=100}$	88.2	A
Pulsed Drain Current	$I_{DM}$	320	A
Total Power Dissipation(TC=25 )	$P_D@TC=25$	150	W
Operating Junction Temperature	$T_J$	-55 to 150	
Storage Temperature	$T_{STG}$	-55 to 150	
Single Pulse Avalanche Energy@L=0.1mH	$E_{AS}$	125	mJ
Avalanche Current@L=0.1mH	$I_{AS}$	50	A





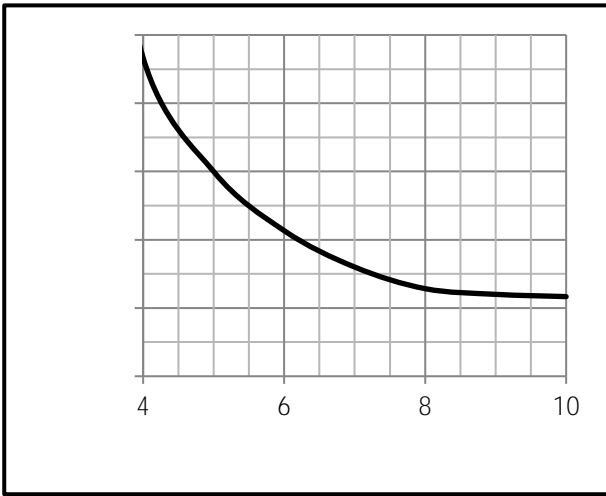


Fig.9 Switching Time Measurement Circuit

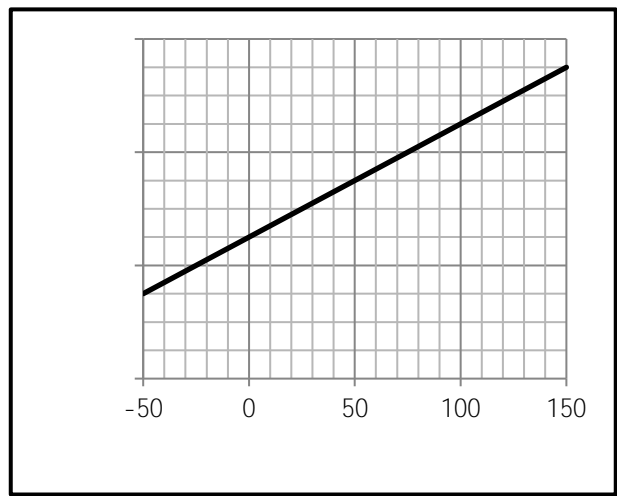


Fig.10 Gate Charge Waveform

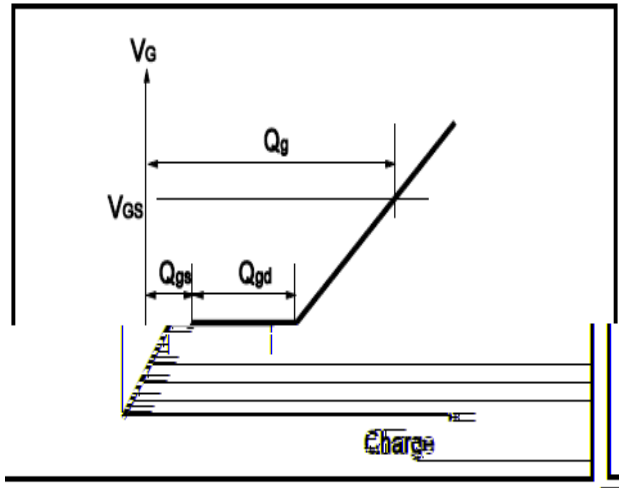
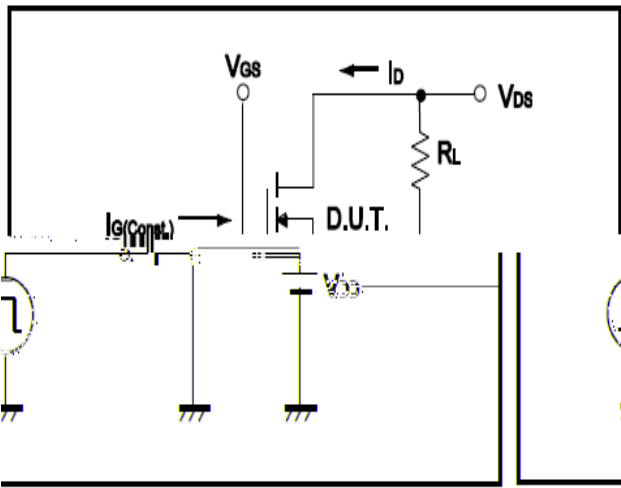


Fig.11 Switching Time Measurement Circuit

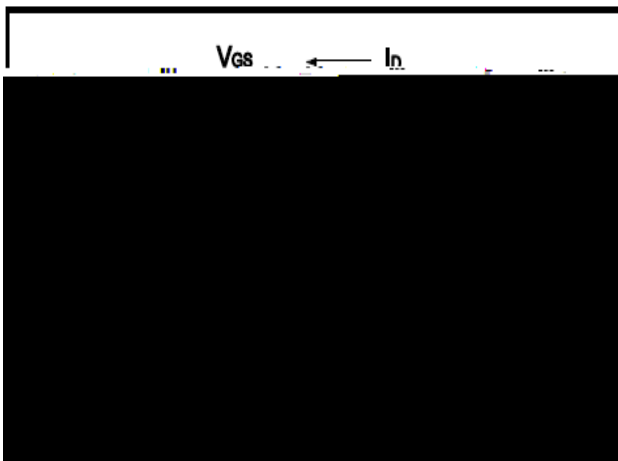
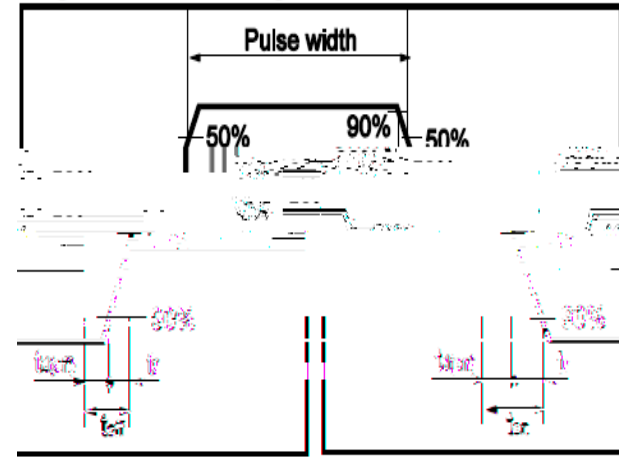


Fig.12 Gate Charge Waveform





-220F)

Unit mm

Dimensions In Millimeters			Dimensions In Millimeters		
Symbol	Min	Max	Symbol	Min	Max
a	4.5	4.9	e	2.90	3.90
b	12.48	13.48	f	3.28	3.50
c	3.08	3.28	g	2.34	2.56
d	2.96	3.08	h	12.48	13.48
			i	2.34	2.56
			j	2.96	3.08
			k	2.34	2.56
			l	2.96	3.08
			m	2.34	2.56
			n	2.96	3.08
			o	2.34	2.56
			p	2.96	3.08
			q	2.34	2.56
			r	2.96	3.08
			s	2.34	2.56
			t	2.96	3.08
			u	2.34	2.56
			v	2.96	3.08
			w	2.34	2.56
			x	2.96	3.08
			y	2.34	2.56
			z	2.96	3.08

