



T_c =25

Parameter	Symbol	Rating	Unit
Drain-Source Voltage	V _{DS}	150	V
Gate-Source Voltage	V _{GS}	±20	V
Continuous Drain Current	I _{D@TC=25}	120	A
	I _{D@TC=75}	91	A
	I _{D@TC=100}	75	A
Pulsed Drain Current	I _{DM}	360	A

Total Power Dissipation(TC=25



Body Diode Reverse Recovery Charge	Qrr			160		
------------------------------------	-----	--	--	-----	--	--

Note:

;

Fig.1 Maximum Safe Operating Area

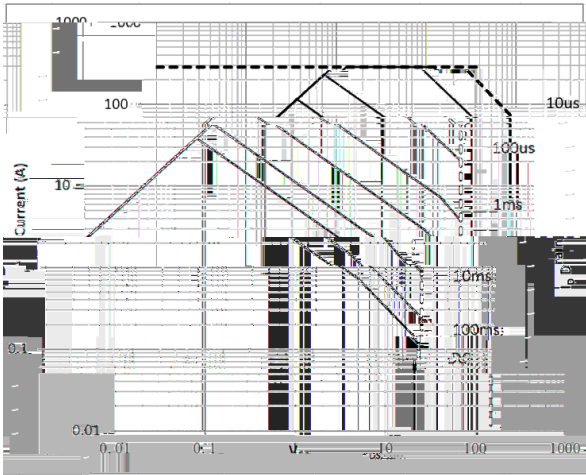


Fig.2 Capacitance Characteristics

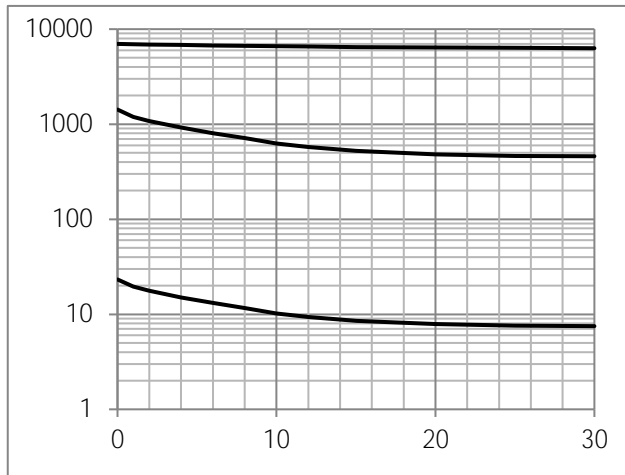


Fig.3 Power Dissipation Derating Curve

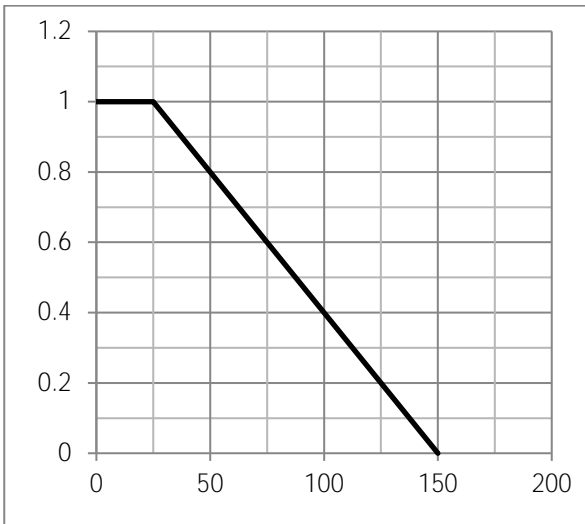


Fig.4 Typical output Characteristics

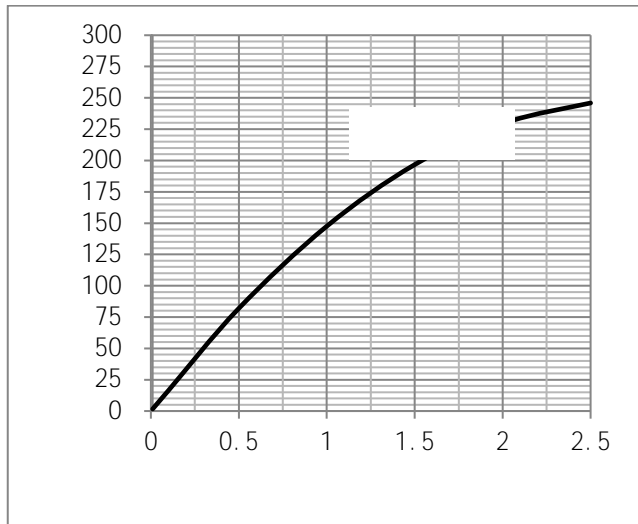






Fig.9 Switching Time Measurement Circuit

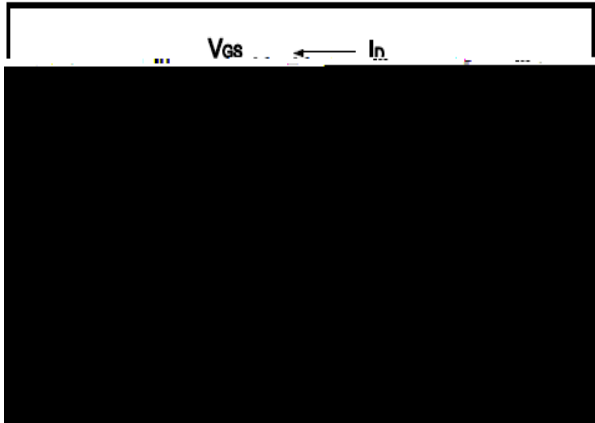


Fig.10 Gate Charge Waveform

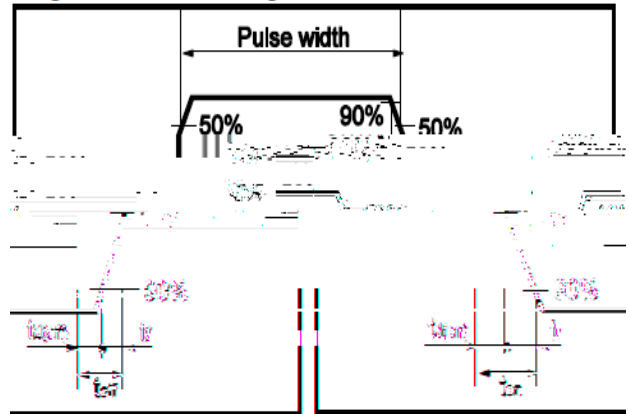


Fig.11 Avalanche Measurement Circuit

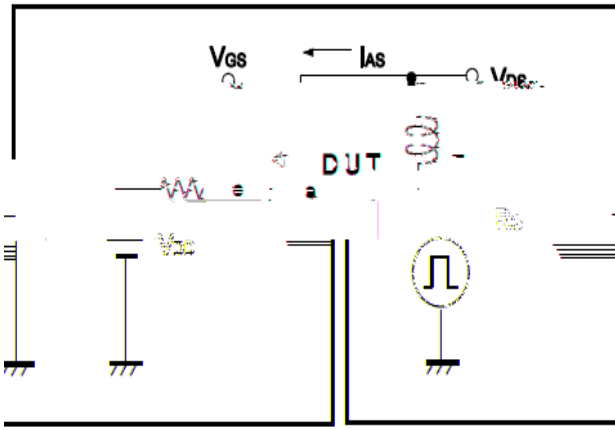
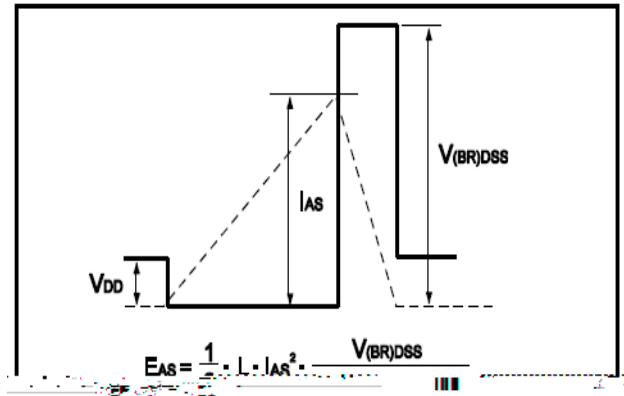


Fig.12 Avalanche Waveform





(TO-220)

Unit mm

	2..		2
	0.		.				