

**Ordering Information:****Absolute Maximum Ratings** $T_C = 25$

Parameter	Symbol	Rating	Unit
Drain-Source Voltage	V_{DS}	120	V
Gate-Source Voltage	V_{GS}	± 20	V
Continuous Drain Current($T_C=25$)	$I_{D@TC=25}$	60	A
	$I_{D@TC=75}$	45	A
	$I_{D@TC=100}$	38	A
Pulsed Drain Current	I_{DM}	180	A





Note:

;

Fig.1 Gate-Charge Characteristics

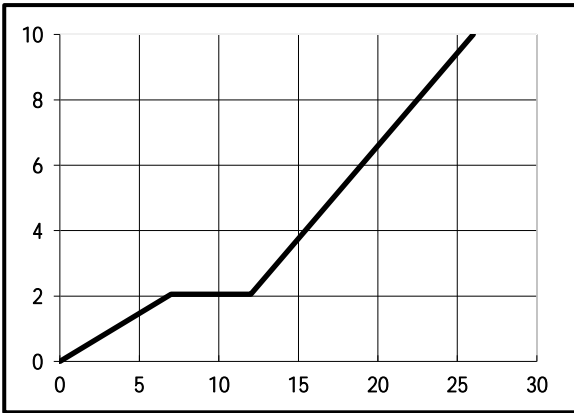


Fig.2 Capacitance Characteristics

Fig.3 Power Dissipation

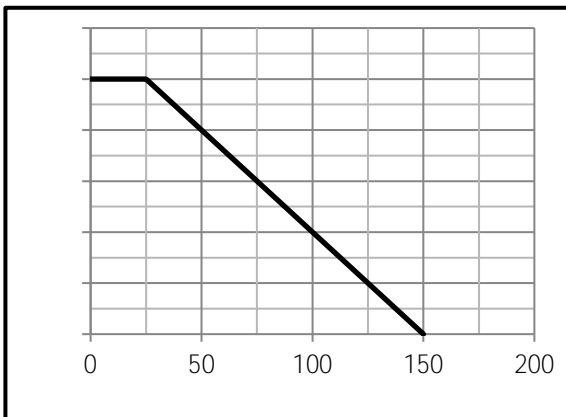


Fig.4 Typical output Characteristics

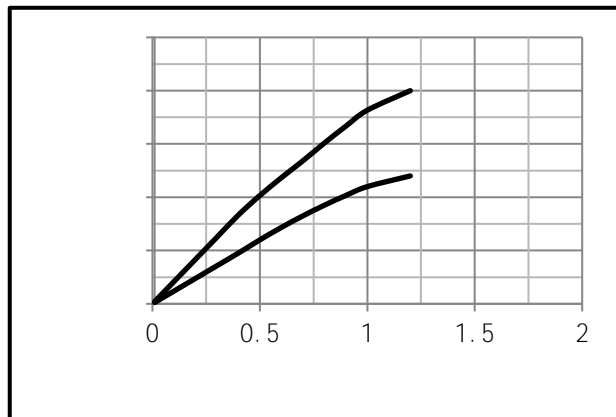


Fig.5 Threshold Voltage V.S Junction Temperature

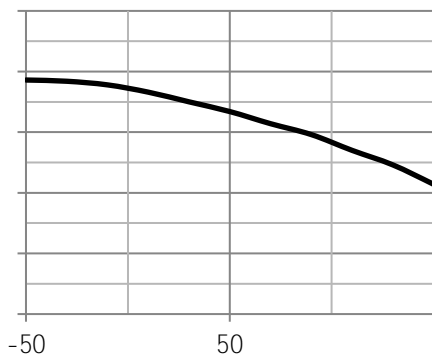
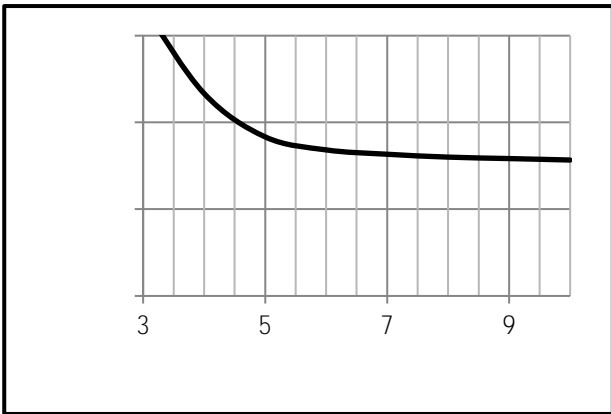


Fig.6 Resistance V.S Drain Current



0



1

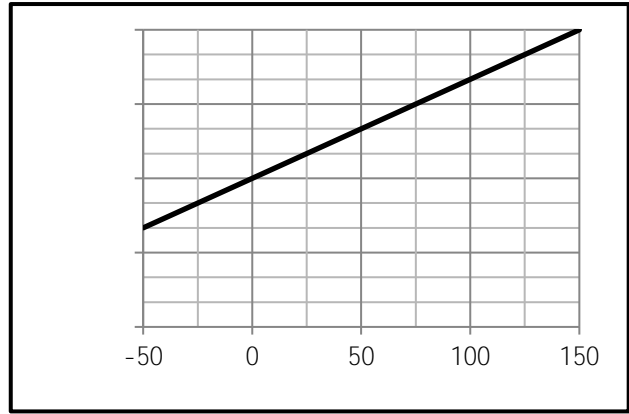


Fig.9 Switching Time Measurement Circuit

Fig.10 Gate Charge Waveform

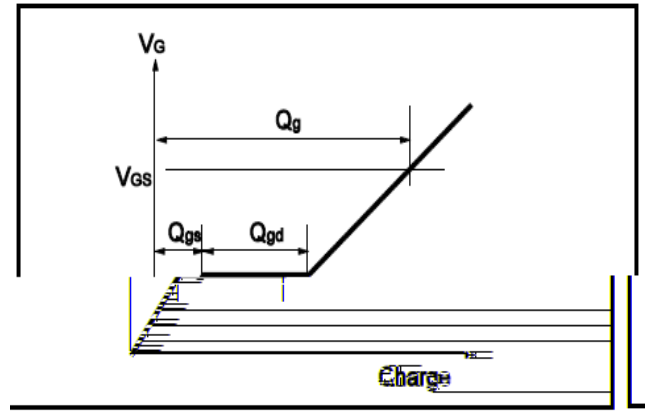
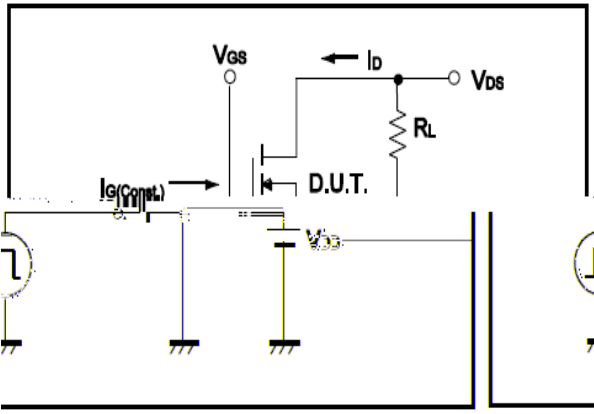


Fig.11 Switching Time Measurement Circuit

Fig.12 Gate Charge Waveform

