



**Ordering Information:**

**Absolute Maximum Ratings**  $T_C = 25$

| Parameter                | Symbol        | Rating   | Unit |
|--------------------------|---------------|----------|------|
| Drain-Source Voltage     | $V_{DS}$      | 60       | V    |
| Gate-Source Voltage      | $V_{GS}$      | $\pm 20$ | V    |
| Continuous Drain Current | $I_D@T_C=25$  | 80       | A    |
|                          | $I_D@T_C=75$  | 60.8     | A    |
|                          | $I_D@T_C=100$ | 50.4     | A    |

Pulsed Drain Current



Fig.1 Power Dissipation

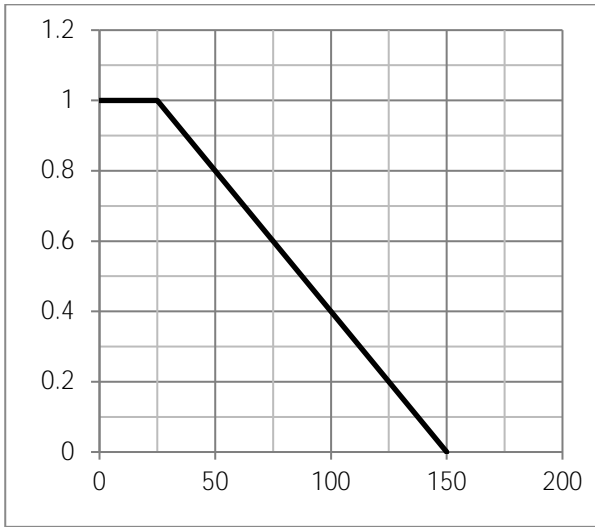


Fig.2 Typical output Characteristics

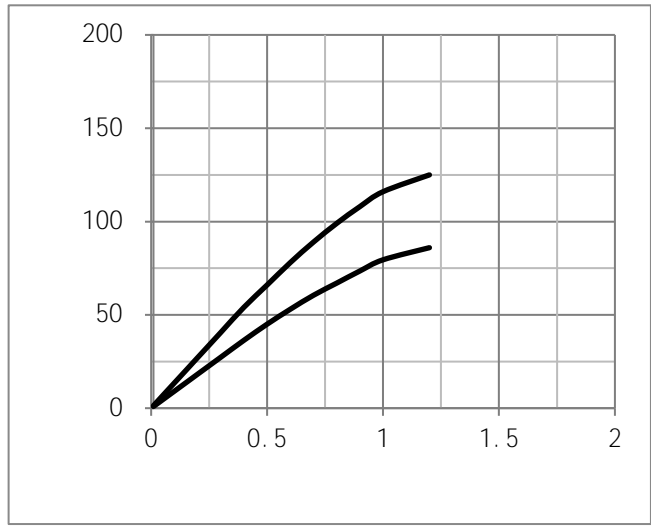


Fig.3 Threshold Voltage V.S Junction Temperature

Fig.4 Resistance V.S Drain Current

