



P Channel characteristics curve

Fig.1 Power Dissipation Derating Curve

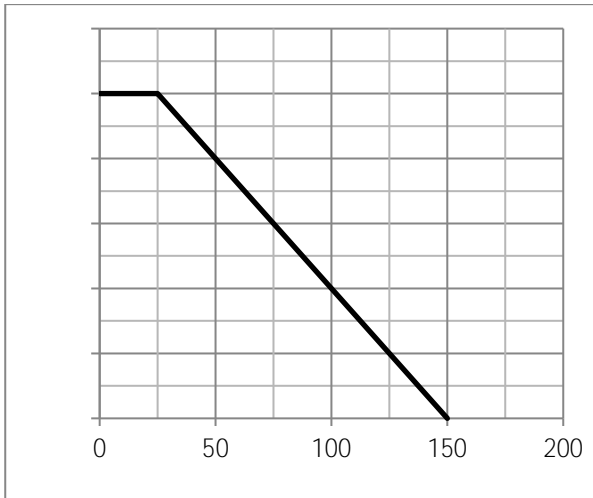


Fig.2 Typical output Characteristics

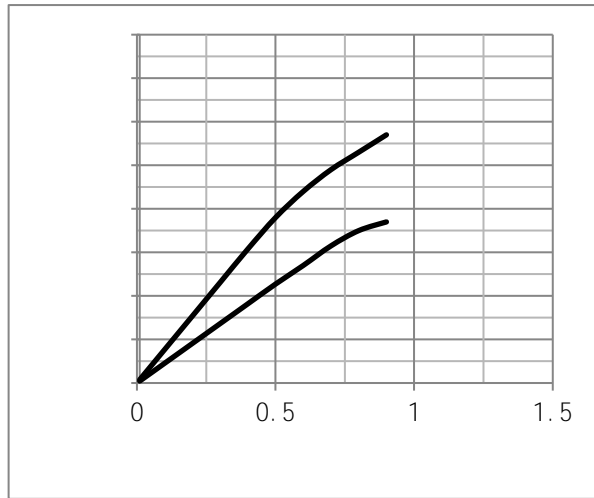


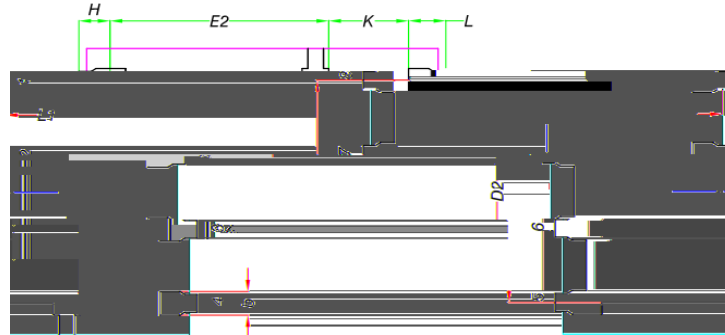
Fig.3 Threshold Voltage V.S Junction Temperature

Fig.4 Resistance V.S Drain Current

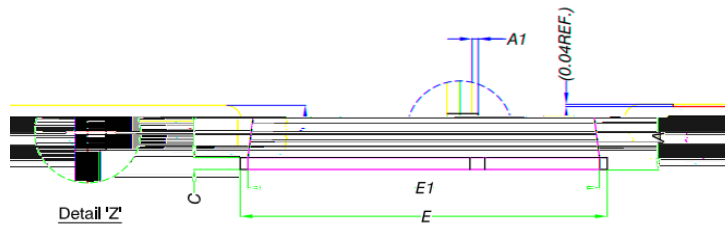
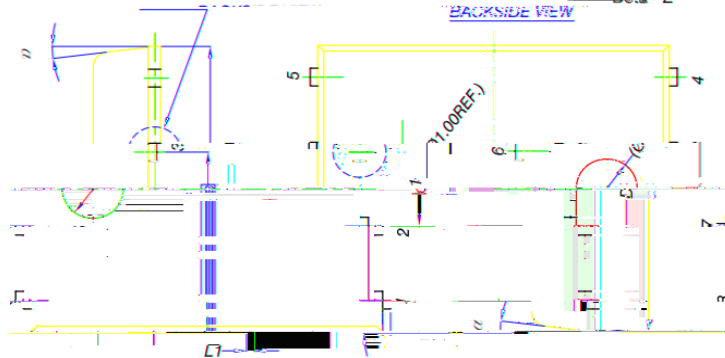


sions DFN5x6

Unit mm



Detail 'Y' BACKSIDE VIEW



Detail 'Z'

MILLIMETERS

D1	4.80	4.90	5.00
D2	3.61	3.81	3.96
E1	5.90	6.00	6.10
E	5.70	5.75	5.80
e	1.27 BSC		
H	0.41	0.51	0.61
K	1.10		
L		0.51	0.61
L1	1.27	1.27	1.27
L2	0.51	0.61	0.71
L3	0.51	0.61	0.71
L4	0.51	0.61	0.71
L5	0.51	0.61	0.71
L6	0.51	0.61	0.71
L7	0.51	0.61	0.71
L8	0.51	0.61	0.71
L9	0.51	0.61	0.71
L10	0.51	0.61	0.71
L11	0.51	0.61	0.71
L12	0.51	0.61	0.71
L13	0.51	0.61	0.71
L14	0.51	0.61	0.71
L15	0.51	0.61	0.71
L16	0.51	0.61	0.71
L17	0.51	0.61	0.71
L18	0.51	0.61	0.71
L19	0.51	0.61	0.71
L20	0.51	0.61	0.71
L21	0.51	0.61	0.71
L22	0.51	0.61	0.71
L23	0.51	0.61	0.71
L24	0.51	0.61	0.71
L25	0.51	0.61	0.71
L26	0.51	0.61	0.71
L27	0.51	0.61	0.71
L28	0.51	0.61	0.71
L29	0.51	0.61	0.71
L30	0.51	0.61	0.71
L31	0.51	0.61	0.71
L32	0.51	0.61	0.71
L33	0.51	0.61	0.71
L34	0.51	0.61	0.71
L35	0.51	0.61	0.71
L36	0.51	0.61	0.71
L37	0.51	0.61	0.71
L38	0.51	0.61	0.71
L39	0.51	0.61	0.71
L40	0.51	0.61	0.71
L41	0.51	0.61	0.71
L42	0.51	0.61	0.71
L43	0.51	0.61	0.71
L44	0.51	0.61	0.71
L45	0.51	0.61	0.71
L46	0.51	0.61	0.71
L47	0.51	0.61	0.71
L48	0.51	0.61	0.71
L49	0.51	0.61	0.71
L50	0.51	0.61	0.71
L51	0.51	0.61	0.71
L52	0.51	0.61	0.71
L53	0.51	0.61	0.71
L54	0.51	0.61	0.71
L55	0.51	0.61	0.71
L56	0.51	0.61	0.71
L57	0.51	0.61	0.71
L58	0.51	0.61	0.71
L59	0.51	0.61	0.71
L60	0.51	0.61	0.71
L61	0.51	0.61	0.71
L62	0.51	0.61	0.71
L63	0.51	0.61	0.71
L64	0.51	0.61	0.71
L65	0.51	0.61	0.71
L66	0.51	0.61	0.71
L67	0.51	0.61	0.71
L68	0.51	0.61	0.71
L69	0.51	0.61	0.71
L70	0.51	0.61	0.71
L71	0.51	0.61	0.71
L72	0.51	0.61	0.71
L73	0.51	0.61	0.71
L74	0.51	0.61	0.71
L75	0.51	0.61	0.71
L76	0.51	0.61	0.71
L77	0.51	0.61	0.71
L78	0.51	0.61	0.71
L79	0.51	0.61	0.71
L80	0.51	0.61	0.71
L81	0.51	0.61	0.71
L82	0.51	0.61	0.71
L83	0.51	0.61	0.71
L84	0.51	0.61	0.71
L85	0.51	0.61	0.71
L86	0.51	0.61	0.71
L87	0.51	0.61	0.71
L88	0.51	0.61	0.71
L89	0.51	0.61	0.71
L90	0.51	0.61	0.71
L91	0.51	0.61	0.71
L92	0.51	0.61	0.71
L93	0.51	0.61	0.71
L94	0.51	0.61	0.71
L95	0.51	0.61	0.71
L96	0.51	0.61	0.71
L97	0.51	0.61	0.71
L98	0.51	0.61	0.71
L99	0.51	0.61	0.71
L100	0.51	0.61	0.71