

Product Summary

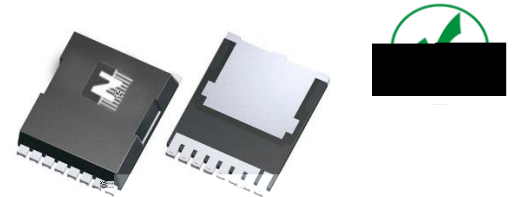
It combines advanced trench MOSFET technology with a low resistance package to provide extremely low $R_{DS(ON)}$.

device constructure
 $R_{DS(ON)}$ to minimize conduction loss



6
 / 74

Synchronous Rectification for AC-DC/DC-DC converter
 Oring switches
 Power Tools



Part NO.	ZMS016N08HR
Marking	ZMS016N08H
Packing Information	REEL TAPE
Basic ordering unit (pcs)	1000

$T_c = 25$

Parameter	Symbol	Rating	Unit
Drain-Source Voltage	V_{DS}	80	V
Gate-Source Voltage	V_{GS}	± 20	V
Continuous Drain Current	$I_{D@TC=25}$	240	A
	$I_{D@TC=75}$	182	A
	$I_{D@TC=100}$	151	A
Pulsed Drain Current	I_{DM}	720	A
Total Power Dissipation	$P_D@TC=25$	290	W
Operating Junction Temperature	T_J	-55 to 150	
Storage Temperature	T_{STG}	-55 to 150	
Single Pulse Avalanche Energy@L=0.1mH	E_{AS}	480	mJ



Turn-Off Fall time				34		ns
				85		ns
		6 2		34		ns
		5 766 5 2		28		ns
		6		120		ns

Note: 1 1% ;

Fig.1 Gate-Charge Characteristics

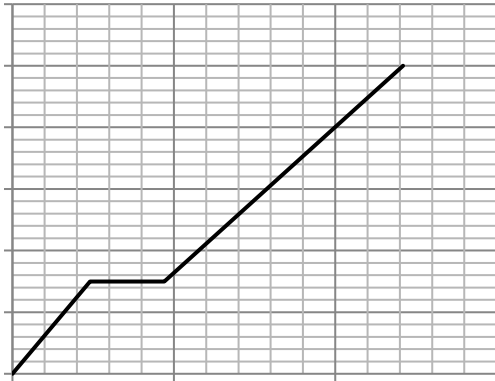


Fig.2 Capacitance Characteristics

Fig.3 Power Dissipation

Fig.4 Typical output Characteristics

Fig.5 Threshold Voltage V.S Junction Temperature

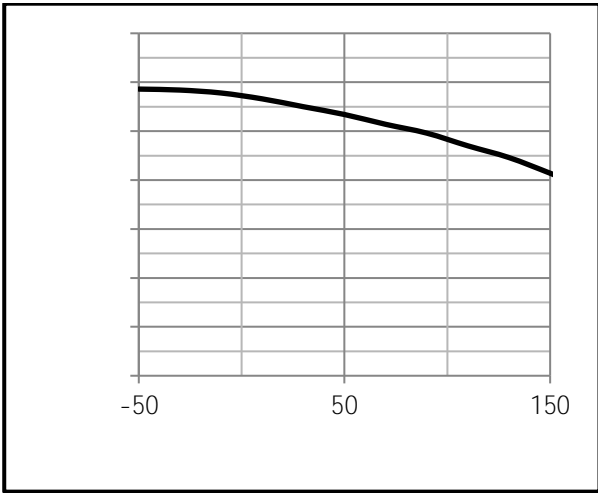
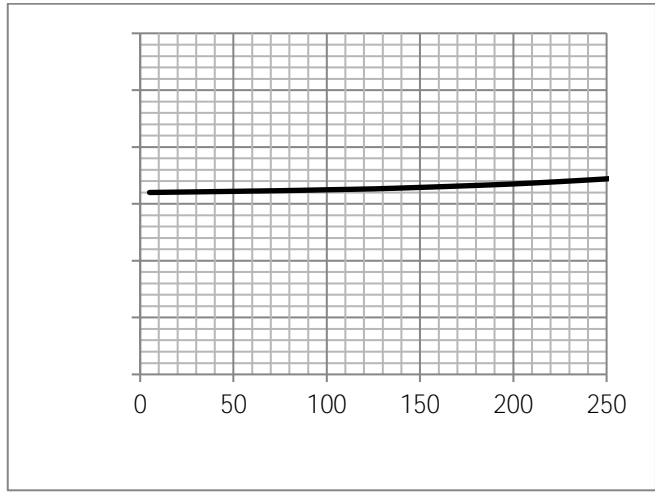
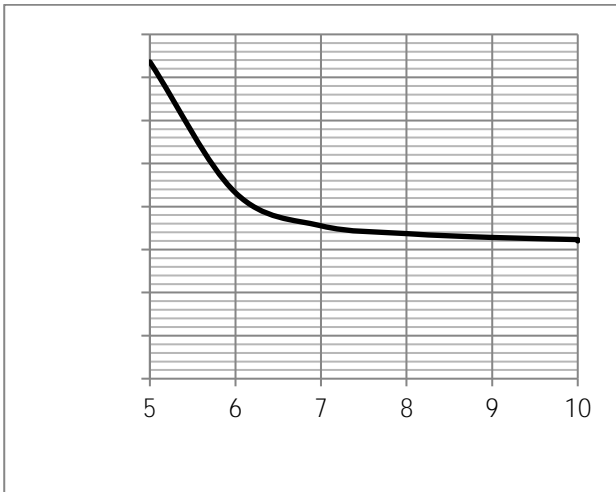


Fig.6 Resistance V.S Drain Current



4 3



4 3 4

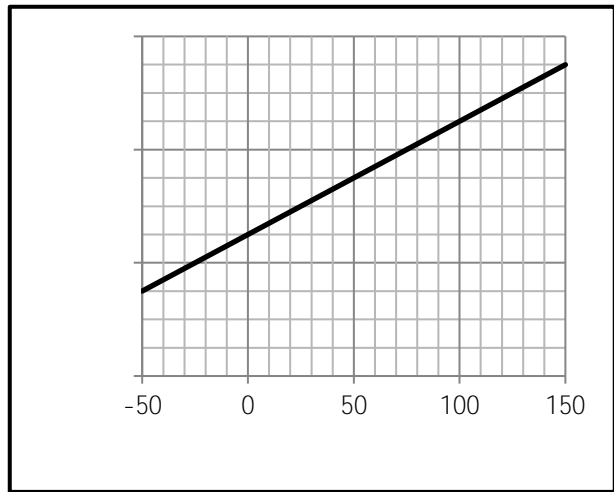


Fig.9 SOA Maximum Safe Operating Area

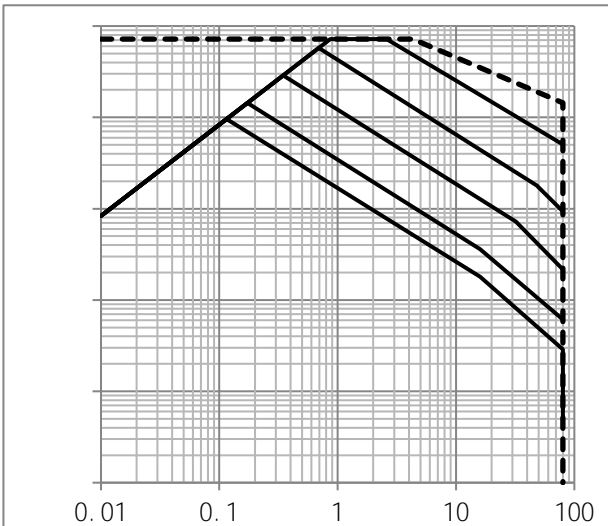


Fig.10 ID-Junction Temperature

